



TIMBERLINES

W. J. Breckenridge Chapter
Izaak Walton League
November 2024

www.breckenridgeikes.org



Social Educational Meeting:
Tuesday, November 26 7:30 pm
Talking Trash with
Dave McNary

Please join us for a discussion of Hennepin County trash disposal alternatives. Dave McNary, Assistant Director of Hennepin County’s Environment and Energy Department will discuss the county’s Zero Waste efforts to reinvent the county’s solid waste system and reduce the 1.3 million tons of solid waste materials that are generated annually in Hennepin County and the role of HERC and landfills.

Dave has worked 30 plus years for Hennepin County’s Environment and Energy Department Hennepin Energy Recovery Center (HERC). Prior to joining Hennepin County, Dave was the Solid Waste Manager for Pierce County, Wisconsin. Additionally, he served as the Recycling Coordinator for the City of Inver Grove Heights. Dave has a Bachelor of Science Degree from the University of Wisconsin- River Falls and a Master’s degree from Hamline University. Dave also served ten years in the U.S. military.

In his current capacity, Dave manages the county’s waste reduction and recycling programs, household hazardous waste programs, solid waste operations and oversees the county’s district energy facility. Hennepin County’s Solid Waste Division has 56 employees and an annual operating budget of ninety million dollars.

Coming Events

November 2024

- 12 Board of Directors Meeting 7 pm
- 26 Social Educational Meeting 7:30 pm

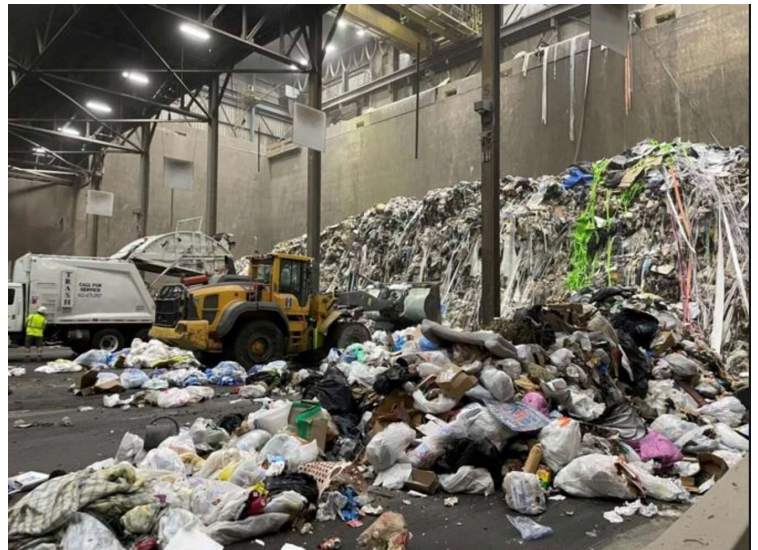
David McNary
Assistant Director at Hennepin County
Department of Environmental Services:
Hennepin Energy Recovery Center
(HERC)

December 2024

- 10 Board of Directors Meeting 7 pm
- 24 No Social Educational Meeting

January 2025

- 14 Board of Directors Meeting 7 pm
- 19 Holiday Party



Thanks to Larry Swanson Large Donation to Scholarship Program

Larry Swanson was a generous contributor to the Breckenridge IWL Chapter scholarship program for many years. When he died in 2021, in line with his wishes, his wife, Sharyl, continued the contributions. The annual gifts to the scholarship program were usual in the \$1,500 to \$3,500 range. This year, as Larry had intended, the amount donated to the scholarship program was increased to \$60,000. She knew that Larry had been very impressed by the quality of the young people our organization supports.



Larry grew up just two lots north of the Breckenridge Chapter and spent many hours with his brothers exploring the Mississippi River. His parents, Carl and Irene, were both active at our local IWL chapter. Larry graduated in Mechanical Engineering from the University of Minnesota, then moved to Utah and worked in the aerospace industry. He worked for a three-year stint in Germany, where he met his wife, Sharyl, who was teaching for the Air Force.

Larry lived an adventurous life. He was a ski patrol member for over thirty years, small plane owner, avid cross-country skier, mountain climber, kayaker, and cyclist. He made twelve solo bike trips to from Utah to Minnesota to visit family, and he and Sharyl put over 19,000 miles on their tandem bike in various countries. In his younger days, he was the Minnesota off-road motorcycle race winner for four years. He climbed major peaks in South America and Tajikistan. His adventurous lifestyle led Larry to volunteer for many worthwhile activities: working at the Wasatch Mountain Club; leading ski tours, including forty-eight annual day tours to

Utah's tallest mountain, Kings Peak; and flying for nonprofits like Light Hawk (conservation) and Angel Flight (cancer patients from rural sites to important medical appointments).

Larry's donations to the scholarship program began soon after his mother died. His mother's will donated a substantial amount to begin an endowment for the scholarship program we had recently formed. For more than twenty years Larry continued to make annual donations to the endowment, as did other generous members. Thanks to Larry, the substantial amount of this recent donation means the endowment can increase the amount our Chapter can award and/or add to the number of recipients we can recognize.

Chapter House Rental Rates*

Current Members who are in good standing only
(damage deposit: \$200.00; \$100 for previous renters)
Monday through
Thursday.....\$150.00
Friday, Saturday, Sunday & Holidays.....\$200.00
Scouts: (damage deposit \$50.00)
Overnights.....\$50.00

*Rates and terms subject to change without notice; please contact the Chapter for special circumstances. The Rental Agreement and Renters Checkout List are available on our website by clicking [here](#).

For availability, please contact Tim Johnson by email johns860@mac.com

Eco-tourism to Costa Rica Supports the Preservation of Fantastic Natural Wonders

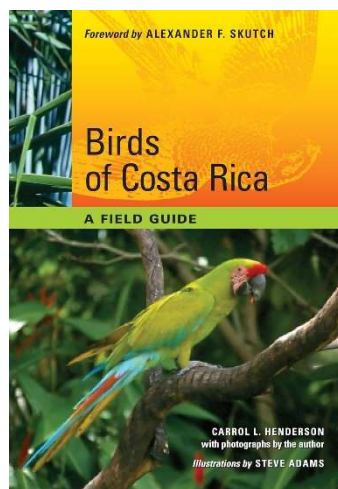
In October we were pleased to hear from our fellow Ike, Lee Ann Landstrom, who has led numerous nature tours to Costa Rica, where she co-owns a dairy farm in the cloud forest. Her background as an interpretive naturalist and environmental educator qualifies her well to introduce us to the natural wonders she has seen and photographed there.



She began with the gorgeous flora, orchids, bromelias and other epiphytes of the cloud forests. Her

tour branched off to introduce us to some of the fauna including iconic birds, mammals, reptiles, amphibians, butterflies and insects of Costa Rica. As she showed them to us, we learned some natural history of each and heard her give numerous impressions of the sounds and calls of various creatures.

For those of us who were ignorant of the similar interests of another of our members, Carrol Henderson, she brought along a copy of his field guide *Birds of Costa Rica: A Field Guide*. Carrol has also authored the field guides *Butterflies, Moths, and Other Invertebrates of*



Costa Rica, and Mammals, Amphibians, and Reptiles of Costa Rica.

Lee Ann is now retired from the directorship (27-years) of Eastman Nature Center with the Three Rivers Park District. She supervised a staff of 12, and oversaw trails, habitat, and exhibits, as well as taught school and public classes. In 1998 Lee Ann was awarded their annual Excellent Employee award. More recently she received an award from our Bush Lake Chapter of the Izaak Walton League. She was also a part-time youth class instructor at the Science Museum of Minnesota in St. Paul for nearly 20 years.

Lee Ann ended by taking us on a tour of the various ecoregions of this small nation which prides itself in preserving 25% of its land in a natural state in protected reserves. This protection continues to draw eco-tourism, contributing greatly to the GDP. Costa Rica's electricity is nearly all from renewable sources. But the country does also have challenges. One which is being experienced in the hot and humid Corcovado region is illegal gold mining which poisons the waters with arsenic.

Landstrom still occasionally leads groups on nature tours to Costa Rica. Since the organization of these trips is only by word of mouth, she invited audience members who inquired about joining a tour to talk to her after the presentation. What an opportunity for those who can find the time and means to experience this beautiful country's natural wonders.!

VOTE **YES** ON AMENDMENT 1

**KEEP LOTTERY MONEY
FOR THE ENVIRONMENT**



**IWLA Breckenridge Chapter
Membership Application:**

Name: _____ Date: _____

Address: _____

Phone: _____

E-Mail: _____

Dues are subject to change.

Please make check payable to: IWLA, Walter J. Breckenridge Chapter

Membership Dues:

Individual: 71.50

Family: 99.00

Student: 43.00

Mail to:

Karen Ostenso

3742 Logan Ave N

Minneapolis, MN 55412.

Benefits of Prairie Strips

Karen Ostenso distilled this from an article in the Minnesota Star Tribune of 10/13/2024, written by Cara Buckley.

About 3 years ago, floodwater destroyed many fields on a family farm raising corn, soybeans and alfalfa in southwest Iowa. To combat future similar events, the farmers removed approximately 11 acres of the tilled land and planted narrow strips with native grasses and wildflowers.

The founder of this prairie strips project is a professor at Iowa State University. To be part of the project, the strips must adjoin active farmland, and native species must be planted.

Researchers found benefits, such as significantly decreased nitrogen and phosphorus runoff from the cropland. Also, helpful bacteria flourished, decreasing levels of nitrous oxide. The strips drew twice as many birds and insects as cultivated cropland.

When the area of the strips is compared to overall tilled ground, it is miniscule. In 2023, it came to 22,972 acres across 14 states. The researchers see improvements over what might be expected. They found that benefits were achieved when 10% of the cropland was converted.

In 2018, the initiative was included in the federal Conservation Reserve Program. Thereafter, farmers could receive payment from the federal government, although the payments do not equal what a farmer would earn by raising livestock or crops.

Some unexpected benefits were reported by farmers. Humans find it relaxing to be among flowers, birds and bees. And some kids are attracted to play in the wilded areas. The project sounds like a small step in putting nature to work.

Breckenridge Chapter Board Meeting Highlights October 8, 2024

Board Officers were elected and the November Social meeting. Steve Schaust, President, Wendy Steele, Secretary, and Sue Schmidt, Treasurer, agreed to stay on. Josh Wildt will replace Larry Kennebeck as Vice President.

Reminder: Have you paid dues?

Notices of Breckenridge Chapter dues for 2025 went out in September. If you have not paid, please follow up with Karen Ostenso. Our Chapter membership determines our representation and votes in the State and National IWLA. (See *Membership Application on page 4*)

Jim Arnold skates across our newly finished floor!



W. J. Breckenridge Chapter
Izaak Walton League of America
8816 West River Road
Brooklyn Park MN 55444



If you would like to submit an article for the Timberlines, please send it to
Barbara Franklin at: bbfrankli@gmail.com
Deadline is the First Day of each month.

All articles in this newsletter do not necessarily reflect the position of the Breckenridge
Board of Directors. The Editor reserves the right to edit material as necessary.

November Haiku

From: *one day and three lines at a time:*

a year of nature haiku

by John Moriarty

*A yellow landscape
Maples, aspen, cottonwoods
Woodlands shade of fall*

